

## CONVERGENCE

089425

COLOR: RIVER FIBER: ABACA GROUP# 900



9' X 12' RUG SHOWN



2' X 2' SAMPLE SHOWN



DETAIL SHOWN



DETAIL SHOWN

### ABOUT CONVERGENCE:

RADIATING OUT FROM A CENTRAL POINT, CONVERGENCE IS A COOL TAKE ON A STRIPE THAT WAS INSPIRED BY AN OP ART PAINTING. THE COILED ABACA CONSTRUCTION GIVES THE STRIPES—WHICH VISUALLY DISSOLVE INTO XS AND ARROWS—THEIR OWN INTERNAL PATTERN, WHILE THE OVERALL IMPRESSION CAN READ AS BOLD AND MODERN OR SUPER SUBTLE DEPENDING ON THE COLORWAY.

# PATTERSON FLYNN

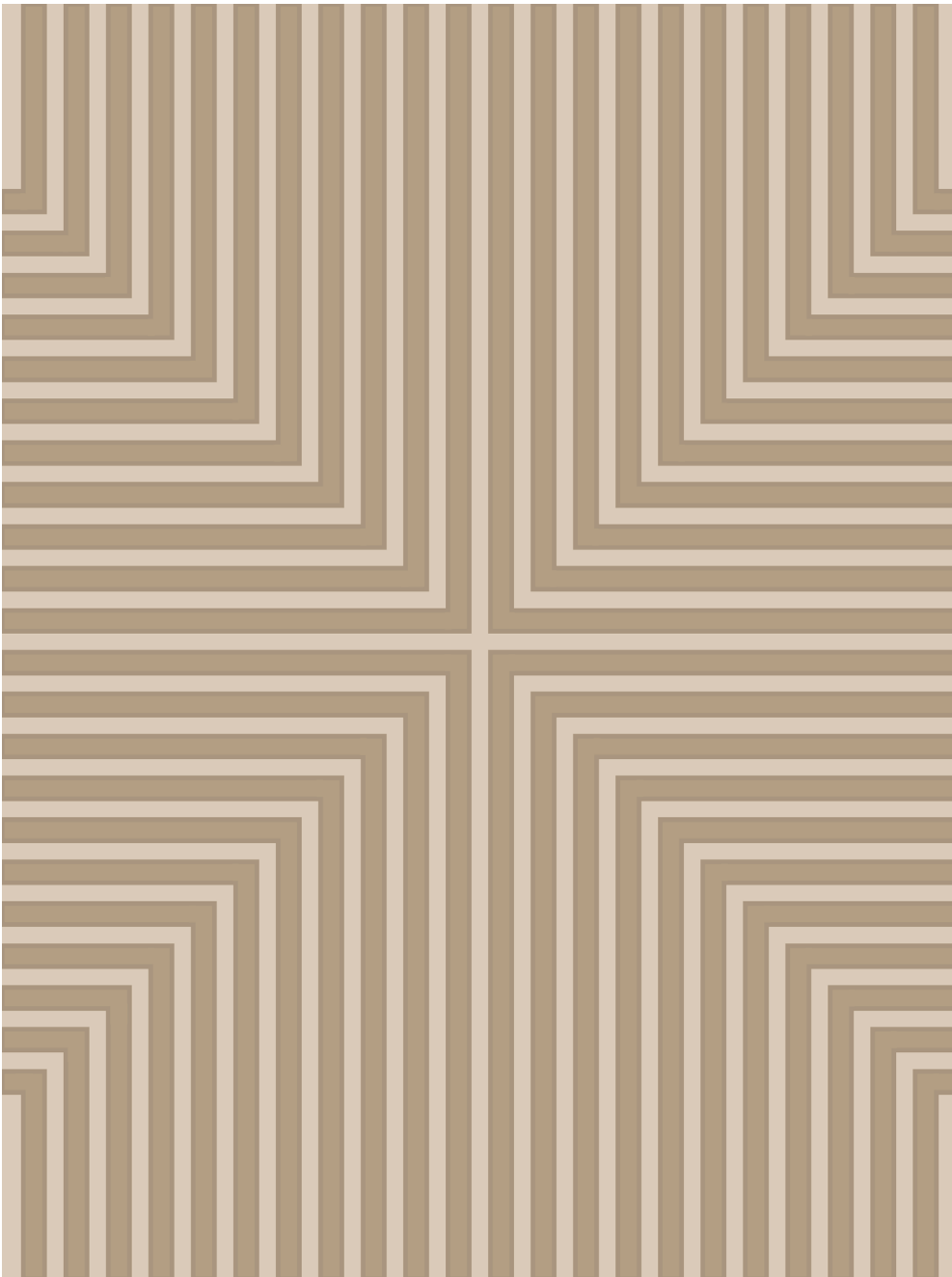
©2024 PATTERSON FLYNN. ALL RIGHTS RESERVED.



## CONVERGENCE

089423

COLOR: NEUTRAL FIBER: ABACA GROUP# 900



ARTWORK FOR 9' X 12' RUG SHOWN



2' X 2' SAMPLE SHOWN



DETAIL SHOWN



DETAIL SHOWN

### ABOUT CONVERGENCE:

RADIATING OUT FROM A CENTRAL POINT, CONVERGENCE IS A COOL TAKE ON A STRIPE THAT WAS INSPIRED BY AN OP ART PAINTING. THE COILED ABACA CONSTRUCTION GIVES THE STRIPES—WHICH VISUALLY DISSOLVE INTO XS AND ARROWS—THEIR OWN INTERNAL PATTERN, WHILE THE OVERALL IMPRESSION CAN READ AS BOLD AND MODERN OR SUPER SUBTLE DEPENDING ON THE COLORWAY.

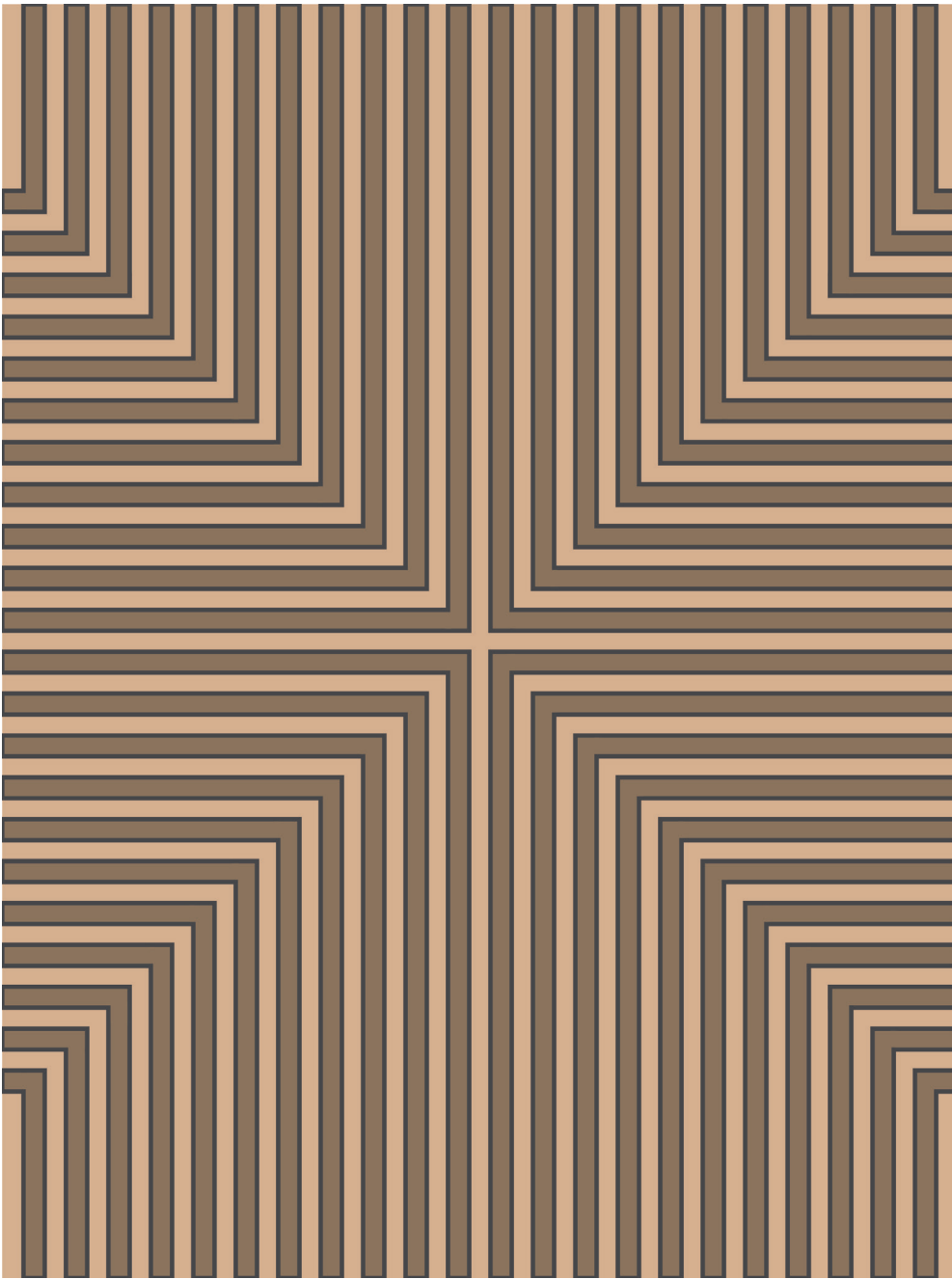
# PATTERSON FLYNN

©2024 PATTERSON FLYNN. ALL RIGHTS RESERVED.

## CONVERGENCE

089424

COLOR: OAK FIBER: ABACA GROUP# 900



ARTWORK FOR 9' X 12' RUG SHOWN



2' X 2' SAMPLE SHOWN



DETAIL SHOWN



DETAIL SHOWN

### ABOUT CONVERGENCE:

RADIATING OUT FROM A CENTRAL POINT, CONVERGENCE IS A COOL TAKE ON A STRIPE THAT WAS INSPIRED BY AN OP ART PAINTING. THE COILED ABACA CONSTRUCTION GIVES THE STRIPES—WHICH VISUALLY DISSOLVE INTO XS AND ARROWS—THEIR OWN INTERNAL PATTERN, WHILE THE OVERALL IMPRESSION CAN READ AS BOLD AND MODERN OR SUPER SUBTLE DEPENDING ON THE COLORWAY.

# PATTERSON FLYNN

©2024 PATTERSON FLYNN. ALL RIGHTS RESERVED.