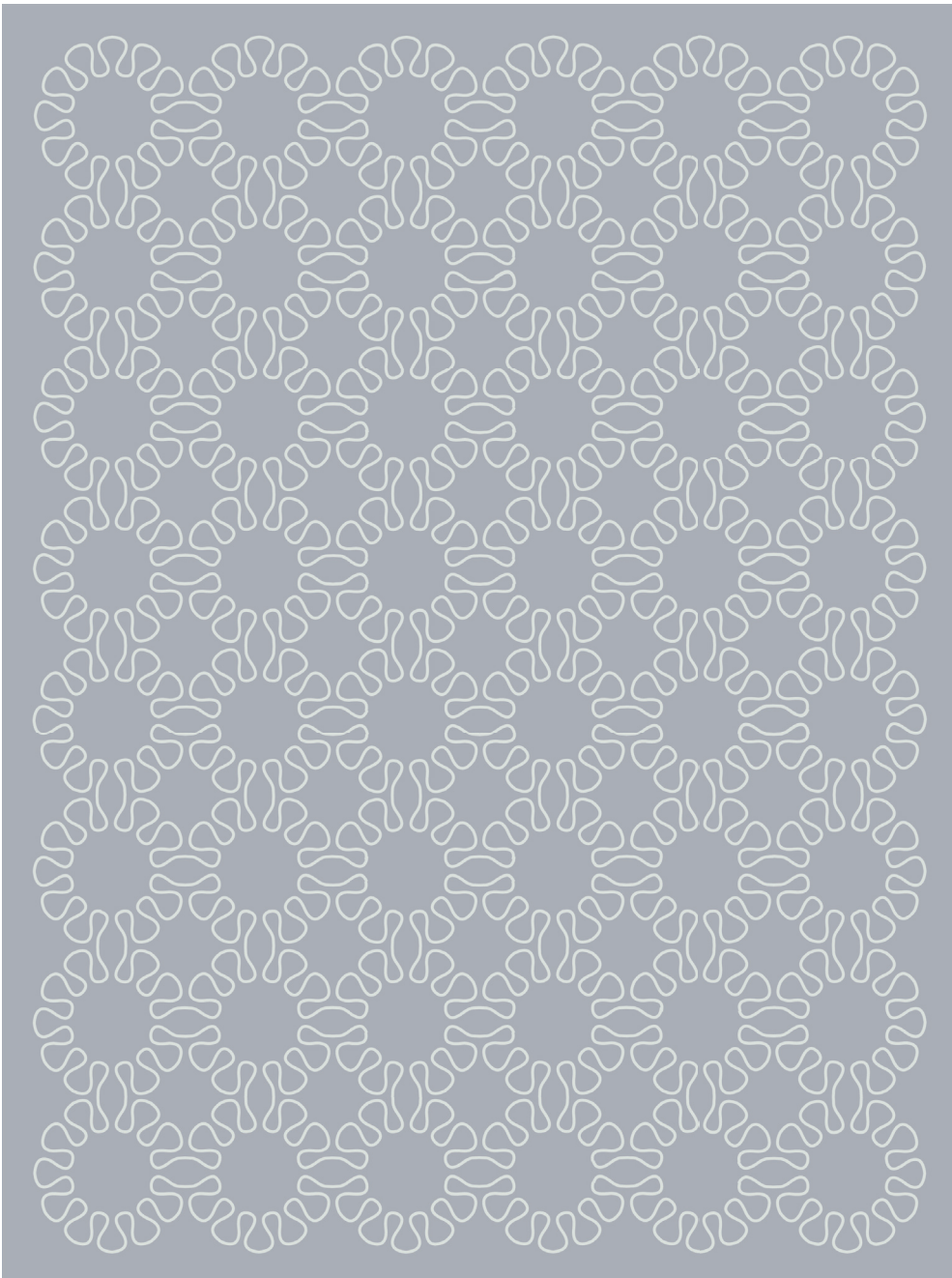


WAVELENGTH

080661

COLOR: SILVER **FIBER:** SILK & WOOL **GROUP#** 517



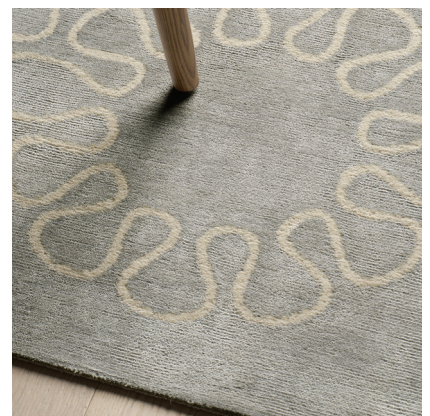
ARTWORK FOR 9' X 12' RUG SHOWN



2' X 2' SAMPLE SHOWN



DETAIL SHOWN



DETAIL SHOWN

ABOUT WAVELENGTH:

WAVELENGTH IN SILVER DISTILLS A VINTAGE LACE EMBROIDERY PATTERN DOWN TO ITS ESSENCE AND MAKES IT SUBTLY MODERN. FORMED FROM A CONTINUOUS CURVING LINE, THE PATTERN WINDS SOFTLY ACROSS THE SUBTLE RIBS OF THE TIBETAN HAND-KNOTTED SILK AND WOOL CONSTRUCTION.

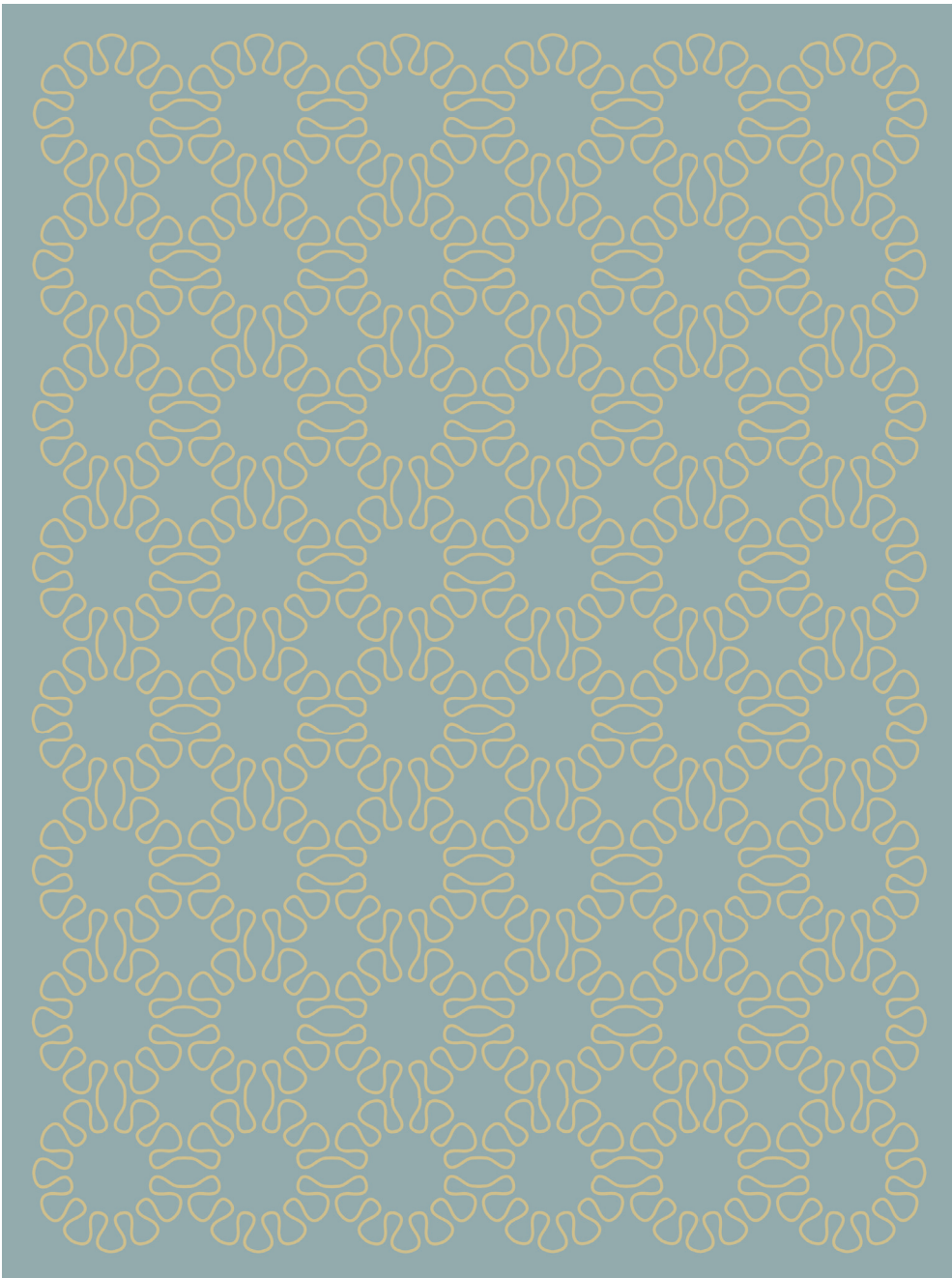
PATTERSON FLYNN

©2023 PATTERSON FLYNN. ALL RIGHTS RESERVED.

WAVELENGTH

080502

COLOR: PALLADIAN BLUE **FIBER:** SILK & WOOL **GROUP#** 517



ARTWORK FOR 9' X 12' RUG SHOWN



2' X 2' SAMPLE SHOWN



DETAIL SHOWN



DETAIL SHOWN

ABOUT WAVELENGTH:

WAVELENGTH IN PALLADIAN BLUE DISTILLS A VINTAGE LACE EMBROIDERY PATTERN DOWN TO ITS ESSENCE AND MAKES IT MODERN. FORMED FROM A CONTINUOUS CURVING LINE, THE PATTERN WINDS ACROSS THE SUBTLE RIBS OF THE TIBETAN HAND-KNOTTED SILK AND WOOL CONSTRUCTION.

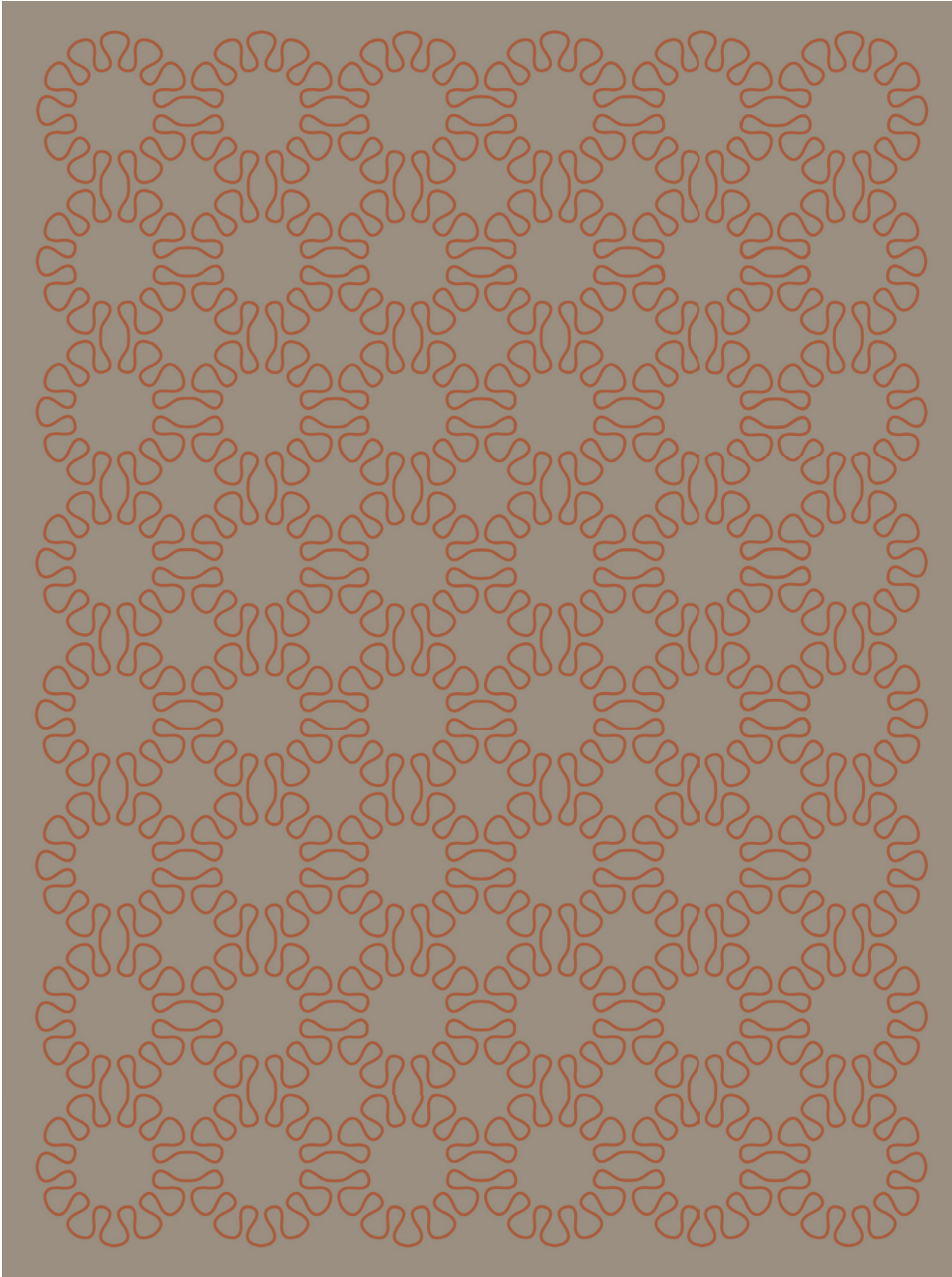
PATTERSON FLYNN

©2023 PATTERSON FLYNN. ALL RIGHTS RESERVED.

WAVELENGTH

080503

COLOR: BROWN **FIBER:** SILK & WOOL **GROUP#** 517



ARTWORK FOR 9' X 12' RUG SHOWN



2' X 2' SAMPLE SHOWN



DETAIL SHOWN



DETAIL SHOWN

ABOUT WAVELENGTH:

WAVELENGTH IN BROWN DISTILLS A VINTAGE LACE EMBROIDERY PATTERN DOWN TO ITS ESSENCE AND MAKES IT MASCULINE AND MODERN. FORMED FROM A CONTINUOUS CURVING LINE, THE PATTERN WINDS ACROSS THE SUBTLE RIBS OF THE TIBETAN HAND-KNOTTED SILK AND WOOL CONSTRUCTION.

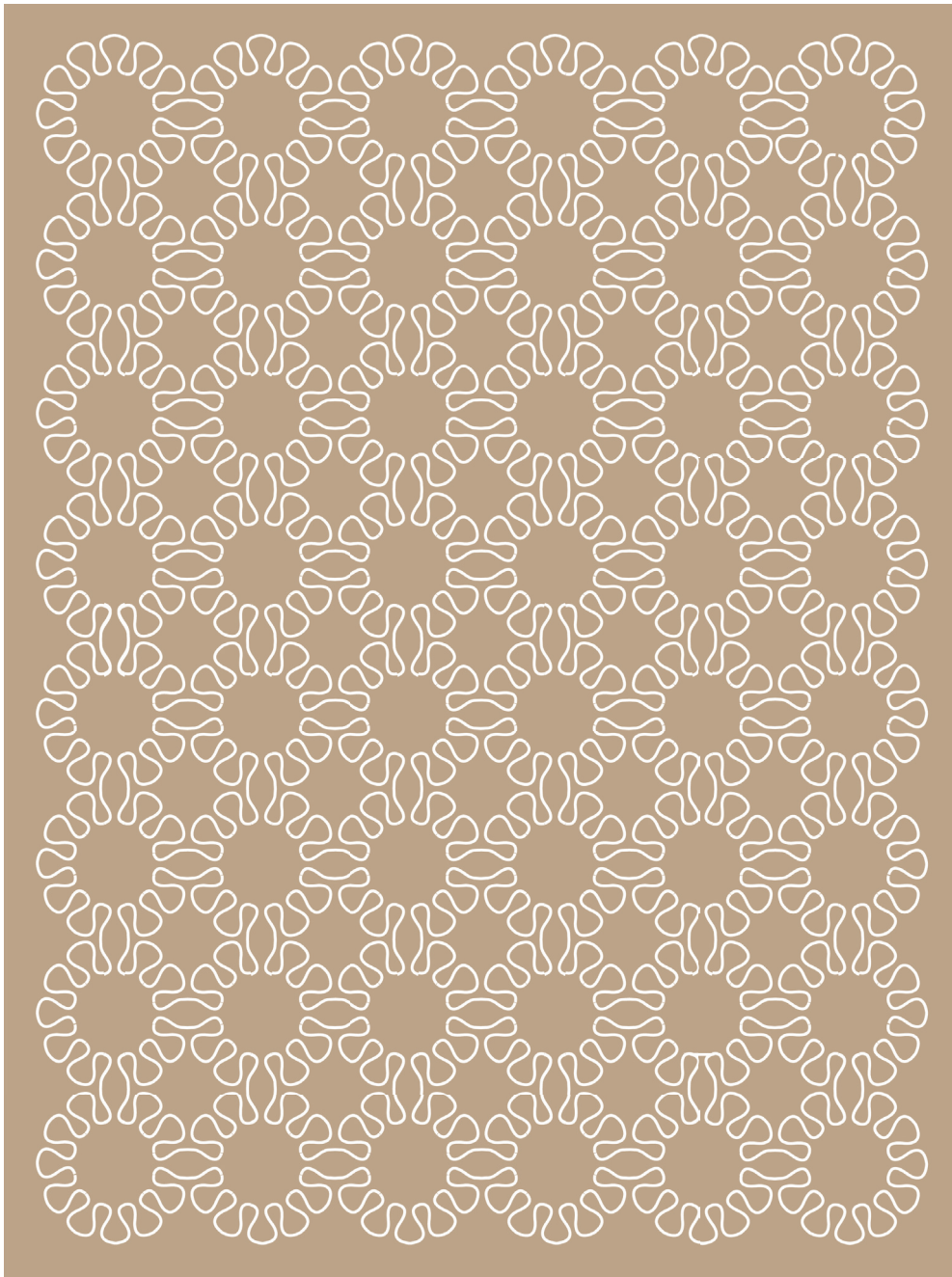
PATTERSON FLYNN

©2023 PATTERSON FLYNN. ALL RIGHTS RESERVED.

WAVELENGTH

080500

COLOR: NEUTRAL **FIBER:** WOOL **GROUP#** 1187



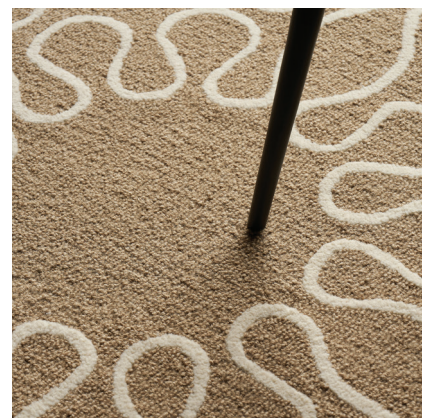
ARTWORK FOR 9' X 12' RUG SHOWN



2' X 2' SAMPLE SHOWN



DETAIL SHOWN



DETAIL SHOWN

ABOUT WAVELENGTH:

WAVELENGTH IN NEUTRAL DISTILLS A VINTAGE LACE EMBROIDERY PATTERN DOWN TO ITS ESSENCE AND MAKES IT STRIKINGLY MODERN. FORMED FROM A CONTINUOUS CURVING LINE, THE PATTERN WINDS ACROSS THE HAND TUFTED WOOL GROUND, WHICH IS MADE UP OF MULTIPLE YARN COLORS THAT GIVE AN INCREDIBLE DEPTH.

PATTERSON FLYNN

©2023 PATTERSON FLYNN. ALL RIGHTS RESERVED.