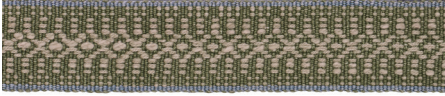
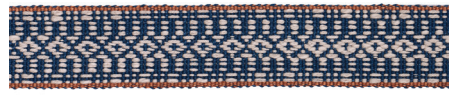


HELENA LINEN COTTON TAPE

Inspired by West African tribal motifs, Helena Linen Cotton Tape is an artisanal trim that is made of hand dyed yarns and woven on a traditional loom. An intricate dobby pattern embroidered in coarse cotton on a fine linen ground with a subtle strié and pop of color along the selvedge, this tape adds texture and interest to curtain panels, Roman shades or pillows.



HELENA LINEN COTTON TAPE
FERN 84022
TRIM



HELENA LINEN COTTON TAPE
INDIGO 84020
TRIM



HELENA LINEN COTTON TAPE
NATURAL 84021
TRIM

DISTRIBUTED THROUGH SCHUMACHER

PATTERSON FLYNN

PATTERSONFLYNN.COM

©2024 PATTERSON FLYNN. ALL RIGHTS RESERVED.