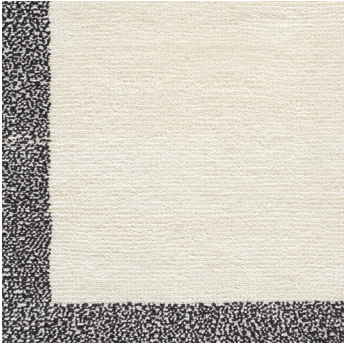


PFM

EXQUISITE GEOMETRICS

The hand-made rugs in this collection explore the full spectrum of geometry—from precise and orderly, to sculptural and expressionistic, to patterns comprised of organic forms. United by an underlying theme of relation to space and shape, these statement-making rugs appeal to our instinctual desire for natural order, while also inspiring creativity and individuality.



ANKERS
HAND-KNOTTED WOOL
72210



TENAYA
HAND-KNOTTED WOOL
71702



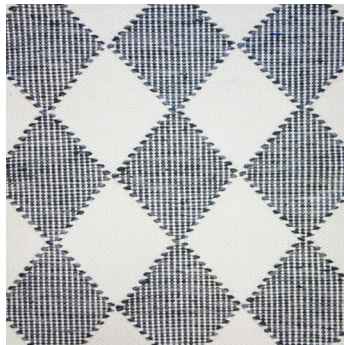
VITUS
HAND-KNOTTED WOOL & SILK
75010



LULI
HAND-KNOTTED WOOL & SILK
72483



ZIPPON
HANDMADE GOAT HAIR
77646



FALL CREEK
HAND-WOVEN WOOL
66513



IGIS
HAND-WOVEN WOOL & COTTON
77430



BIRDS EYE
HAND-WOVEN FAUX SILK
78461



METRIC
HAND-TUFTED WOOL
75067



RINDLE
HAND-TUFTED WOOL & SILK
12345

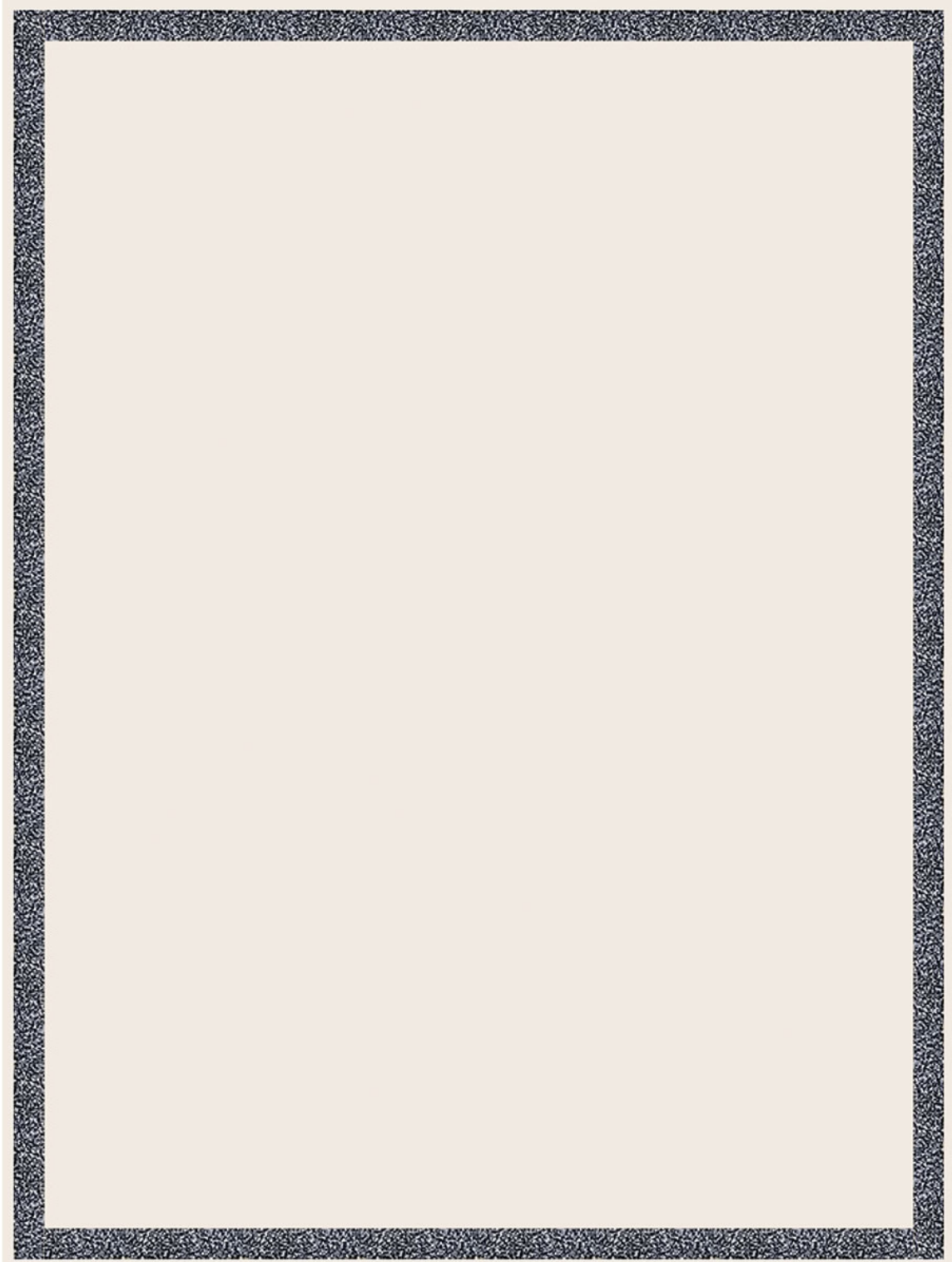


RATIO
HAND-TUFTED WOOL & SILK
75071



INFINITY
HAND-TUFTED
WOOL, SILK & FAUX SILK
75060

EXQUISITE GEOMETRICS



72210 IN DOMINO
ACTUAL 9' X 12' RUG SHOWN

ANKERS

CONSTRUCTION: HAND-KNOTTED

FIBER: WOOL

PATTERSONFLYNNMARTIN.COM

©2020 PATTERSON FLYNN MARTIN. ALL RIGHTS RESERVED.

EXQUISITE GEOMETRICS



71702 IN ALMOND VALLEY
ACTUAL 9' X 12' RUG SHOWN

TENAYA

CONSTRUCTION: HAND-KNOTTED

FIBER: WOOL

PATTERSONFLYNNMARTIN.COM

©2020 PATTERSON FLYNN MARTIN. ALL RIGHTS RESERVED.

EXQUISITE GEOMETRICS



75010 IN MARINE
ARTWORK FOR 9' X 12' RUG SHOWN

VITUS

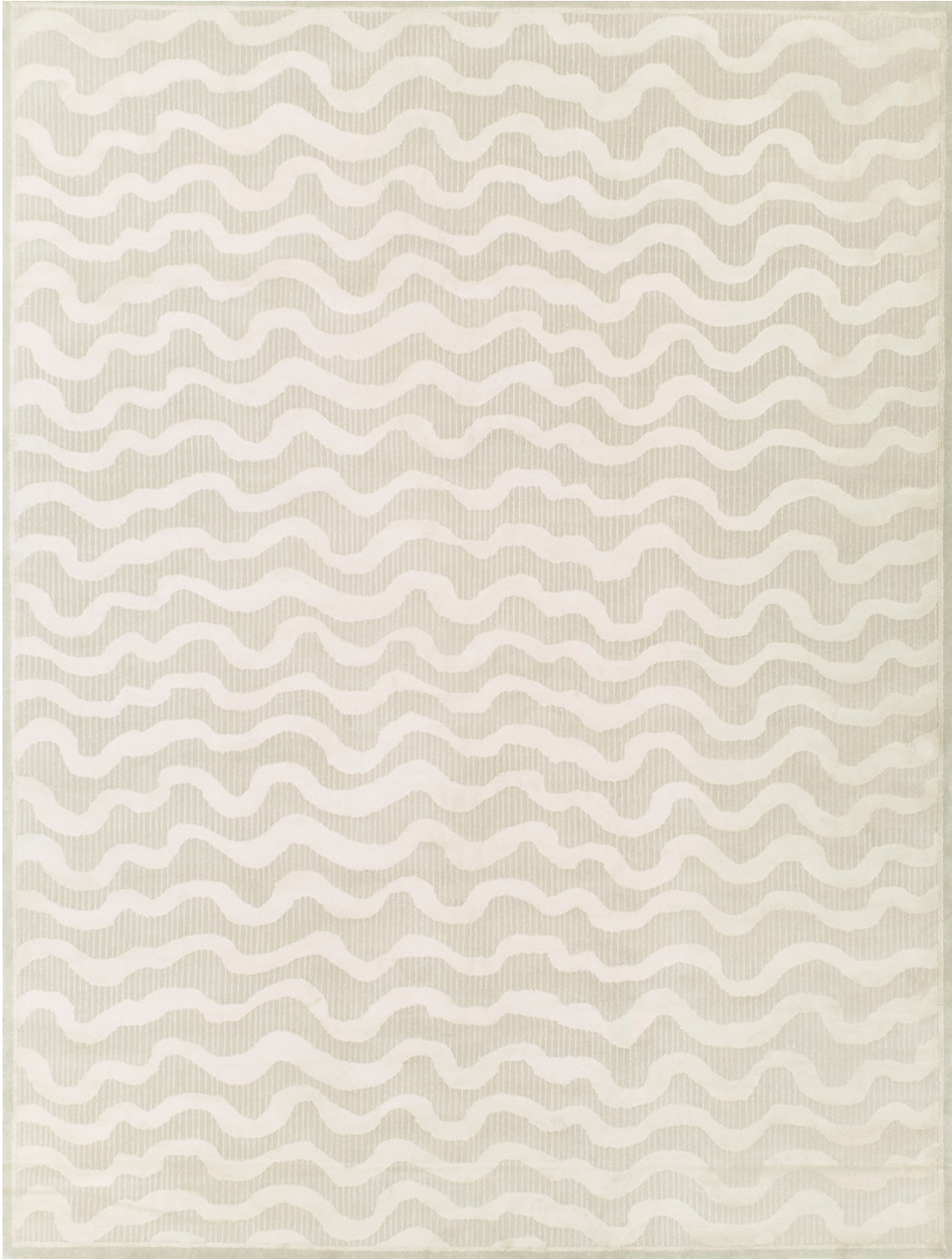
CONSTRUCTION: HAND-KNOTTED

FIBER: WOOL & SILK

PATTERSONFLYNNMARTIN.COM

©2020 PATTERSON FLYNN MARTIN. ALL RIGHTS RESERVED.

EXQUISITE GEOMETRICS



72483 IN CELADON IVORY
ACTUAL 9' X 12' RUG SHOWN

LULI

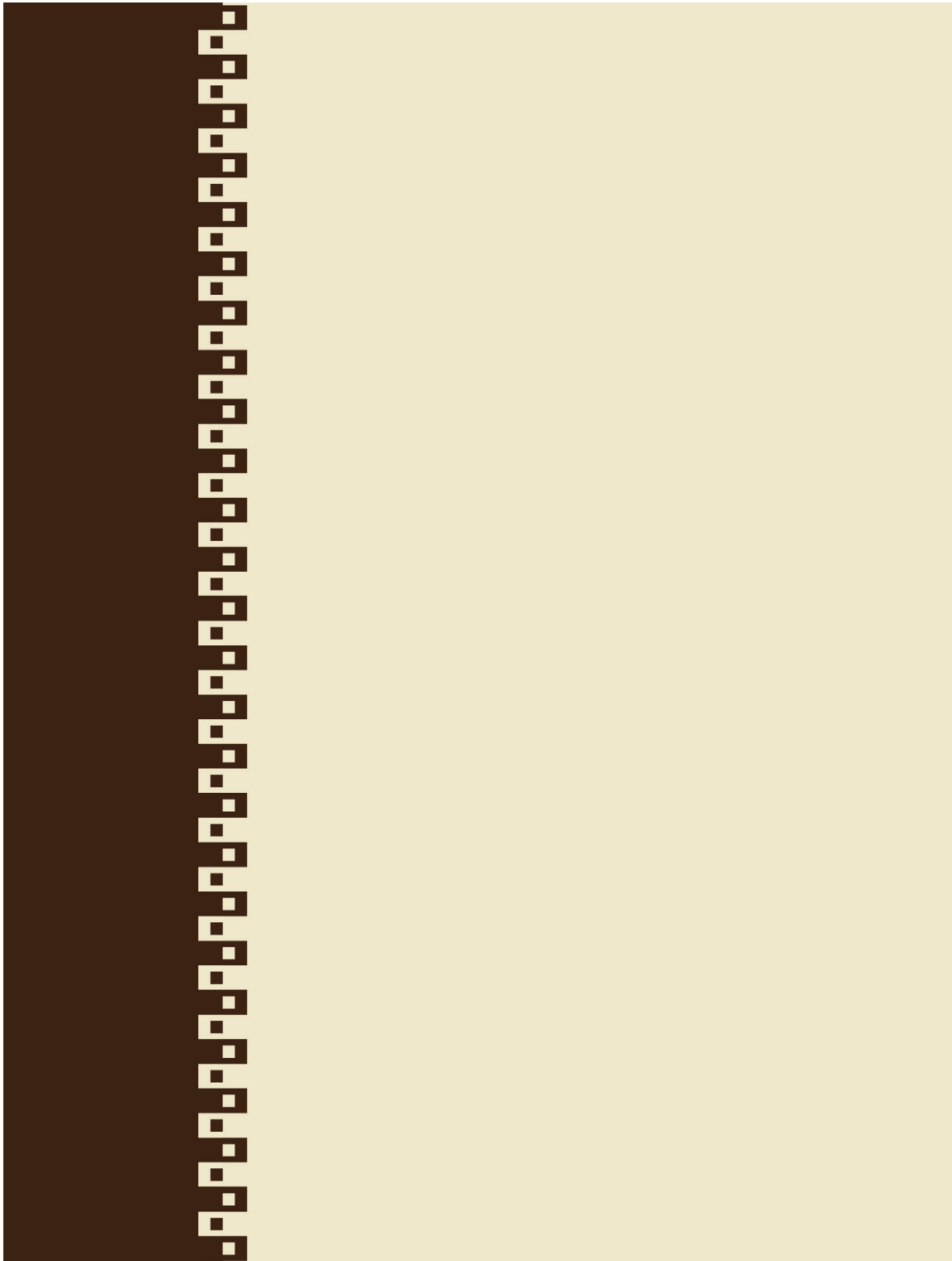
CONSTRUCTION: HAND-KNOTTED

FIBER: WOOL & SILK

PATTERSONFLYNNMARTIN.COM

©2020 PATTERSON FLYNN MARTIN. ALL RIGHTS RESERVED.

EXQUISITE GEOMETRICS



77646 IN CHOCOLATE & CREAM
ARTWORK FOR 9' X 12' RUG SHOWN

ZIPPON

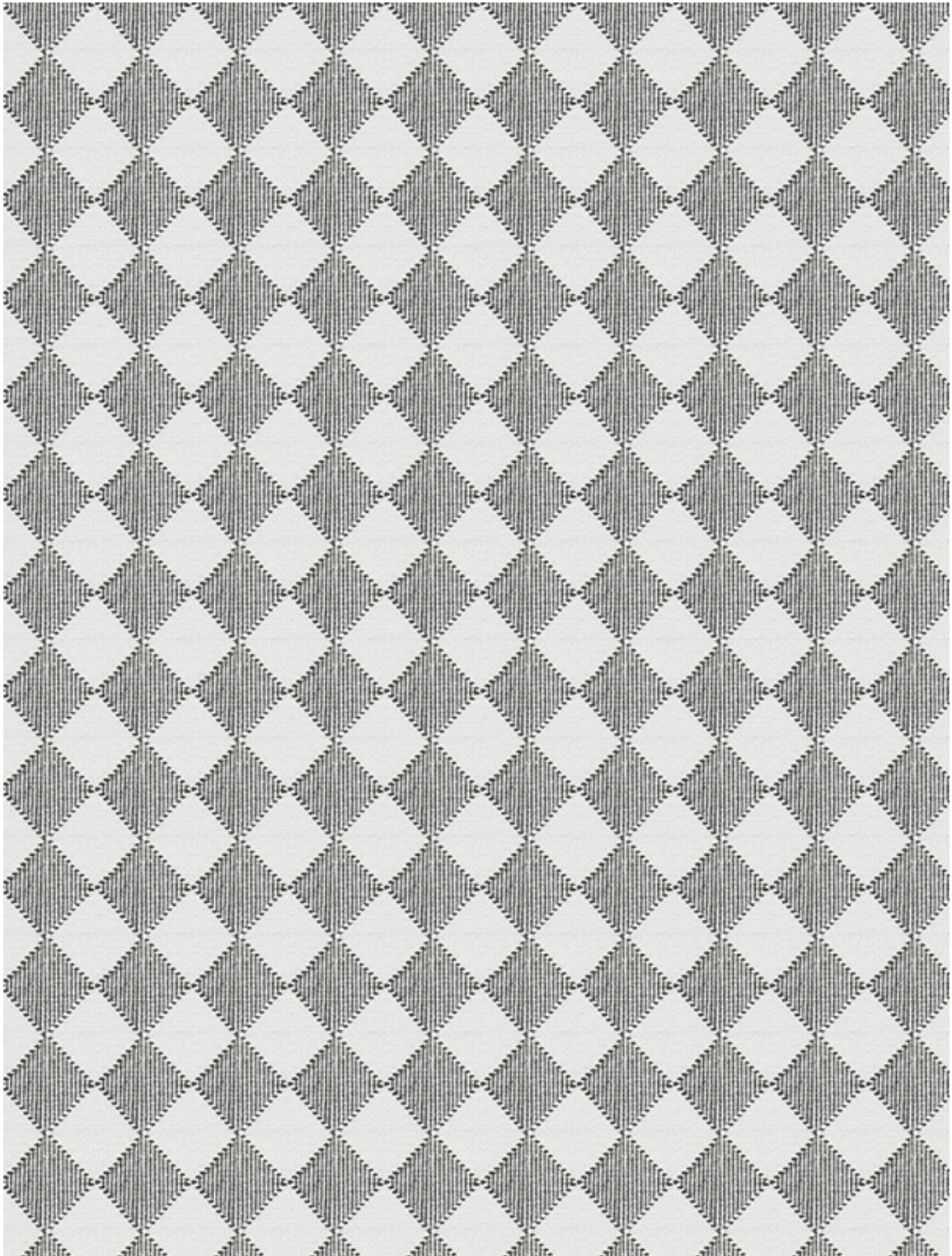
CONSTRUCTION: HANDMADE

FIBER: GOAT HAIR

PATTERSONFLYNNMARTIN.COM

©2020 PATTERSON FLYNN MARTIN. ALL RIGHTS RESERVED.

EXQUISITE GEOMETRICS



66513 IN WHITE & CHAR
ACTUAL 9' X 12' RUG SHOWN

FALL CREEK

CONSTRUCTION: HAND-WOVEN

FIBER: WOOL

PATTERSONFLYNNMARTIN.COM

©2020 PATTERSON FLYNN MARTIN. ALL RIGHTS RESERVED.

EXQUISITE GEOMETRICS



77430 IN HINT OF BLUSH
ACTUAL 9' X 12' RUG SHOWN

IGIS

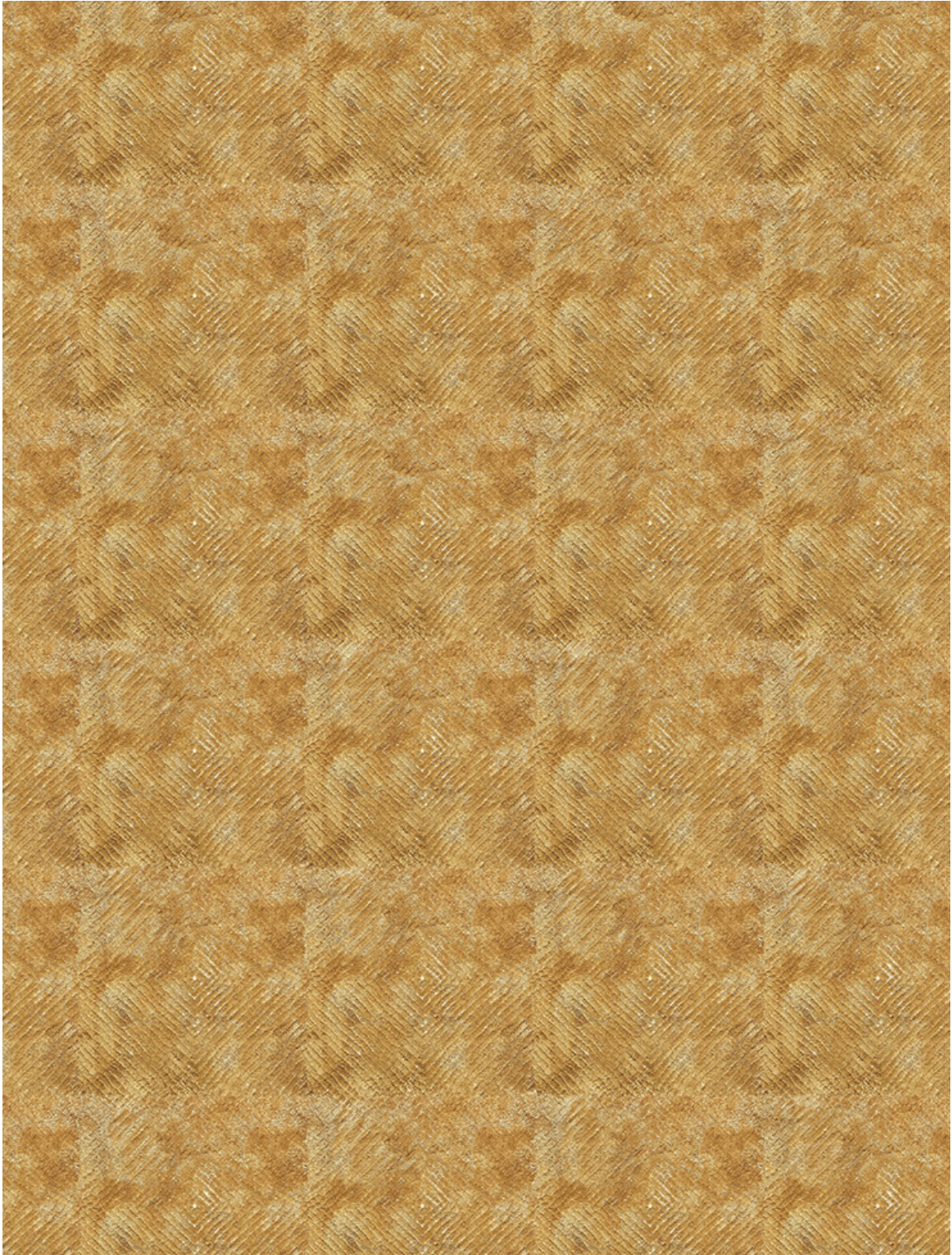
CONSTRUCTION: HAND-WOVEN

FIBER: WOOL & COTTON

PATTERSONFLYNNMARTIN.COM

©2020 PATTERSON FLYNN MARTIN. ALL RIGHTS RESERVED.

EXQUISITE GEOMETRICS



78461 IN GOLD
ACTUAL 9' X 12' RUG SHOWN

BIRDS EYE

CONSTRUCTION: HAND-WOVEN

FIBER: FAUX SILK

PATTERSONFLYNNMARTIN.COM

©2020 PATTERSON FLYNN MARTIN. ALL RIGHTS RESERVED.

EXQUISITE GEOMETRICS



75067 IN PUFFY
ACTUAL 6' X 9' RUG SHOWN

METRIC

CONSTRUCTION: HAND-TUFTED

FIBER: WOOL

PATTERSONFLYNNMARTIN.COM

©2020 PATTERSON FLYNN MARTIN. ALL RIGHTS RESERVED.

EXQUISITE GEOMETRICS



66574 IN BLACK & WHITE
ACTUAL 9' X 12' RUG SHOWN

RINDLE

CONSTRUCTION: HAND-TUFTED

FIBER: WOOL & SILK

PATTERSONFLYNNMARTIN.COM

©2020 PATTERSON FLYNN MARTIN. ALL RIGHTS RESERVED.

EXQUISITE GEOMETRICS



75071 IN JAZZ
ACTUAL 9' X 12' RUG SHOWN

RATIO

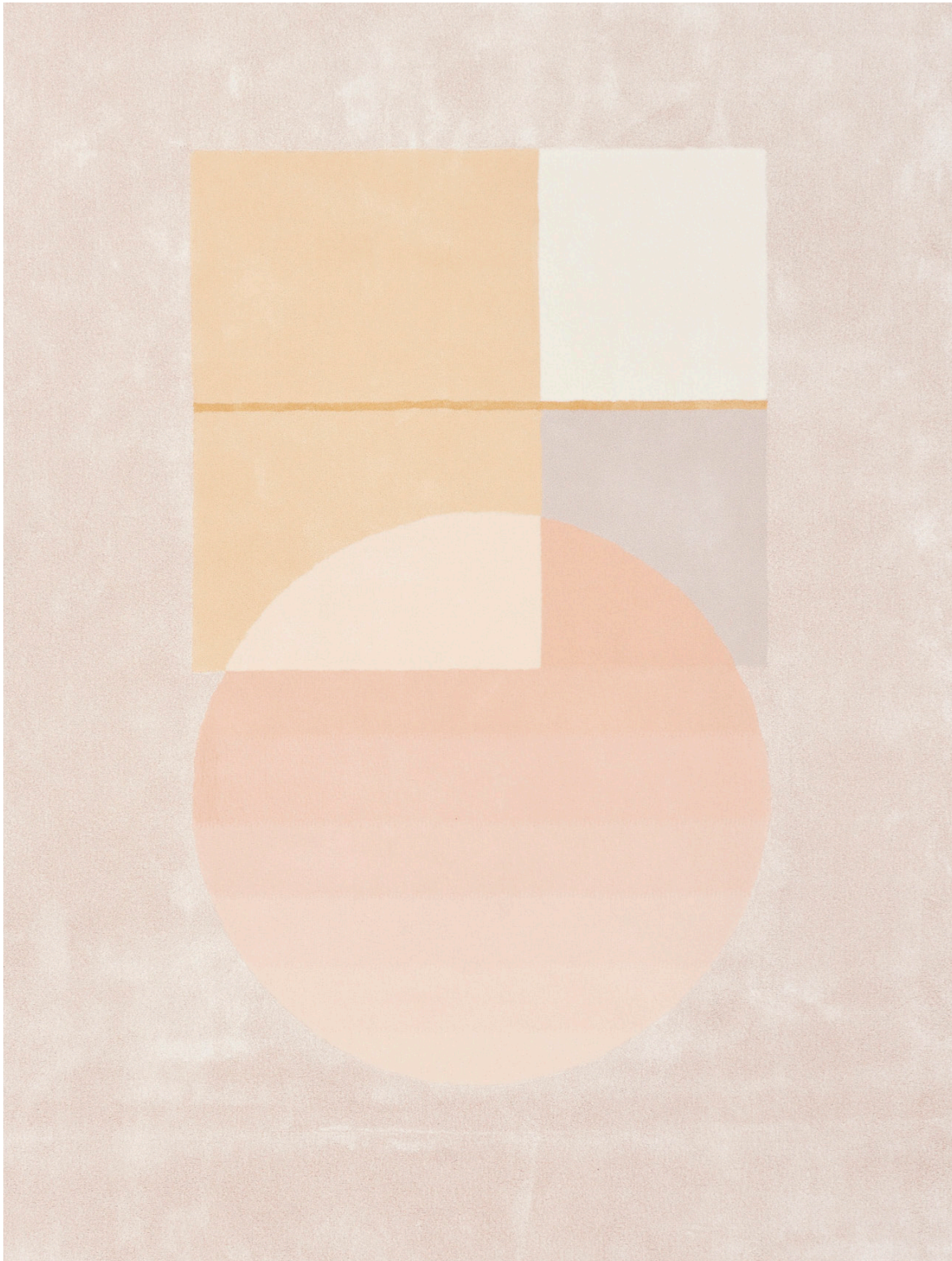
CONSTRUCTION: HAND-TUFTED

FIBER: WOOL & SILK

PATTERSONFLYNNMARTIN.COM

©2020 PATTERSON FLYNN MARTIN. ALL RIGHTS RESERVED.

EXQUISITE GEOMETRICS



75060 IN SORBET
ACTUAL 6' X 9' RUG SHOWN

INFINITY

CONSTRUCTION: HAND-TUFTED

FIBER: WOOL, SILK & FAUX SILK

PATTERSONFLYNNMARTIN.COM

©2020 PATTERSON FLYNN MARTIN. ALL RIGHTS RESERVED.